

APPENDIX XII - NP EVIDENCE BASE HERITAGE ASSETS IN LAMERTON

Heritage

The past has had a huge influence upon the appearance and layout of our villages, the hamlets, the landscape of fields, farms, woods and roads and lanes that surround them. The houses that we live in often have a long history and are part of ancient street patterns/ settlements.

Part of the public value of heritage assets and the historic environment is the contribution that they can make to understanding and interpreting our past. They are an irreplaceable resource and effective conservation delivers wider social, cultural, economic and environmental benefits.

The conservation of heritage assets in a manner appropriate to their significance is a core planning principle.

Where changes are proposed, the National Planning Policy Framework sets out a clear framework for both plan-making and decision-taking to ensure that heritage assets are conserved, and where appropriate enhanced, in a manner that is consistent with their significance and thereby achieving sustainable development.

NPPF Definition of a Heritage Asset

A building, monument, site, place, area or landscape identified as having a degree of significance meriting consideration in planning decisions, because of its heritage interest.

Heritage asset includes designated heritage assets and assets identified by the local planning authority (including local listing)'. Examples in Lamerton would include the old road from Tavistock Abbey to Abbey Farm at Hurdwick to Lamerton



NPPF Definition of the Historic Environment

All aspects of the environment resulting from the interaction between people and places through time, including all surviving physical remains of past human activity, whether visible, buried or submerged, and landscaped and planted or managed flora’.

An obvious example of this would be Hilltown, which is the oldest surviving part of the settlement of Lamerton village

Hilltown



The National Planning Policy Framework (Sections 184 and 185) gives further guidance saying that all local plans should make the most of ‘heritage assets’ (archaeological sites, historic building, landscapes by setting out (amongst other things)... a positive strategy for the conservation and enjoyment of the historic environment, including heritage assets most at risk through neglect, decay or other threats.

Where it is relevant, neighbourhood plans need to include enough information about local designated and non designated heritage assets including sites of archaeological interest to guide decision and put broader strategic heritage policies from the Local Plan into action at a neighbourhood scale¹.

Lamerton, like many Devon parishes, has a rich and diverse history dating from the prehistoric period through to modern times. There are nationally important designated heritage assets including 53 listed assets currently recorded on the Devon Historic Environment database for Lamerton.

The range of Assets include monuments within the St Peters Church, some Grade II listed properties, milestones and gate-piers to many older properties. With such a wealth of assets spread throughout the parish, it is not practicable to draw up a strategy for each and every one . A rather more pragmatic approach would be to refer any development where there is concern, to the Historic Environment Team at

¹ <http://planningguidance.communities.gov.uk/blog/guidance/conserving-and-enhancing-thehistoric-environment/plan-making-historic-environment/>

County Hall or whoever holds and is responsible for the (local) Heritage Environment Records.

See Table

<p>II* Church of St Peter (/101171163-church-of-st-peter-lamerton) St Peter's Church, Lamerton, West Devon, PL19</p> <p>II Edgecombe Monument in the Churchyard Adjacent to South Aisle of Church of St Peter</p> <p>II Baker Monument in the Churchyard About 1M North of Tower of Church of St Peter</p> <p>II Bloy Monument in the Churchyard About 6M South of South Aisle of Church of St Peter</p> <p>II Botterell Monument in the Churchyard About 5M North of North Aisle of Church of St Peter</p> <p>II Robins Monuments and Railings in the Churchyard About 2M South of South Aisle of Church of St Peter</p> <p>II Row of 4 Monuments in the Churchyard About 9M North of North Aisle of Church of St Peter</p> <p>II Row of 4 Monuments to Frise and Mayjor Families in the Churchyard About 5M South of South Aisle of C</p> <p>II Row of 6 Monuments in the Churchyard About 9M North of North Aisle of Church of St Peter</p> <p>II Row of 7 Monuments in the Churchyard About 2M East of Chancel of Church of St Peter</p> <p>II Sleman and Stephens Monuments in the Churchyard About 8M South of South Aisle of Church of St Peter</p> <p>II Terrell Monument and Railings in the Churchyard About 4M South of the South Aisle of Church of St Peter</p> <p>II Vigers and Bickell Monuments in the Churchyard About 3M South of South Aisle of Church of St Peter</p> <p>II Williams and Davey Monuments in the Churchyard About 3M North of North Aisle of Church of St Peter</p> <p>II Ye Olde Priest's House (/101105743-ye-olde-priests-house-lamerton) Lamerton, West Devon, PL19</p> <p>II Cholwell Farmhouse (/101105772-cholwell-farmhouse-lamerton) Chipshop, West Devon, PL19</p> <p>I Collacombe Manor (/101326224-collacombe-manor-lamerton) Portington, West Devon, PL19</p> <p>II Collacombe Cottages (/101105780-collacombe-cottages-lamerton) West Devon, PL19</p>

II Barn, Flanking Walls and Piers About 18M North of Gateway Attached to Collacombe Manor

II Stable Range About 30M North West of Gateway Attached to Collacombe Manor

II* Walls and Gateway Attached to North of Collacombe Manor

II **The Vicarage** (/101105744-the-vicarage-lamerton) Lamerton, West Devon, PL19

II Gate-Piers, Wall and Railings Attached to North of the Vicarage

II **Greenhill and Homelfigi** (/101326230-greenhill-and-homelfigi-lamerton) Lamerton, West Devon, PL19 [Foxglove Cottage, Greenhill]

II 2 Pairs of Gate-Piers at South West and South East Entrances to **Camplehay**

II Pair of Gate-Piers at Eastern Entrance to **Belgrove House**

II **Hilltown Farmhouse** (/101305716-hilltown-farmhouse-lamerton) Lamerton, West Devon, PL19

II **Fair View** (/101105747-fair-view-lamerton) Lamerton, West Devon, PL19

II **Trevenn** (/101105778-trevenn-lamerton) Rushford, West Devon, PL19

II **Lower Hill Farmhouse** (/101326227-lower-hill-farmhouse-lamerton)

Rushford, West Devon, PL19

II* **Venn House** (/101305736-venn-house-lamerton) Rushford, West Devon, PL19

II Gate-Piers, Wall and Doorway About 10M East of Venn House

II **Hurlditch Court** (/101305781-hurlditch-court-lamerton) West Devon, PL19

II **Willestrew** (/101326229-willestrew-lamerton) West Devon, PL19

II Pair of Gate-Piers and Wall About 10M South East of Willestrew

Chaddlehanger

II **Cleaves** (/101170930-cleaves-lamerton) West Devon, PL19

II **Higher Chaddlehanger** and Attached Gate-Piers

II 4 Pairs of Gate-Piers About 8M and 15M South West of Higher Chaddlehanger

II* **Longhouse** at SX 466 780 (/101105776-longhouse-at-sx-466-780-lamerton)

West Devon, PL19

II **Lower Chaddlehanger** (/101171057-lower-chaddlehanger-lamerton) West Devon, PL19

II **Lower Woodley Farmhouse** (/101305759-lower-woodley-farmhouse-lamerton) West Devon, PL19 [beyond Chipshop]

II **Combe Vale Cottage** (/101326225-combe-vale-cottage-lamerton) West Devon, PL19 [beyond Chipshop]

II **Great Haye** (/101105774-great-haye-lamerton) West Devon, PL19

II **Sportsmans Arms** (/101171081-sportsmans-arms-lamerton) Heathfield, West Devon, PL19 [now Acorns]

II **Higher Haye Farmhouse** (/101105775-higher-haye-farmhouse-lamerton) West Devon, PL19

II **Kilworthy Cottages** (/101172115-kilworthy-cottages-lamerton) [Heathfield]

II Signpost at SX 444 645 (/101105748-signpost-at-sx-444-645-lamerton) Lamerton, West Devon, PL19 [at Blacksmiths]

II Guidepost at SX 437 772 (/101171006-guidepost-at-sx-437-772-lamerton) West Devon, PL19

II Higher Lumburn Bridge (/101172243-higher-lumburn-bridge-lamerton) West Devon, PL19 [near Mill Hill]

II Milestone at SX 430 750 (/101171078-milestone-at-sx-430-750-lamerton)

Chipshop, West Devon, PL19

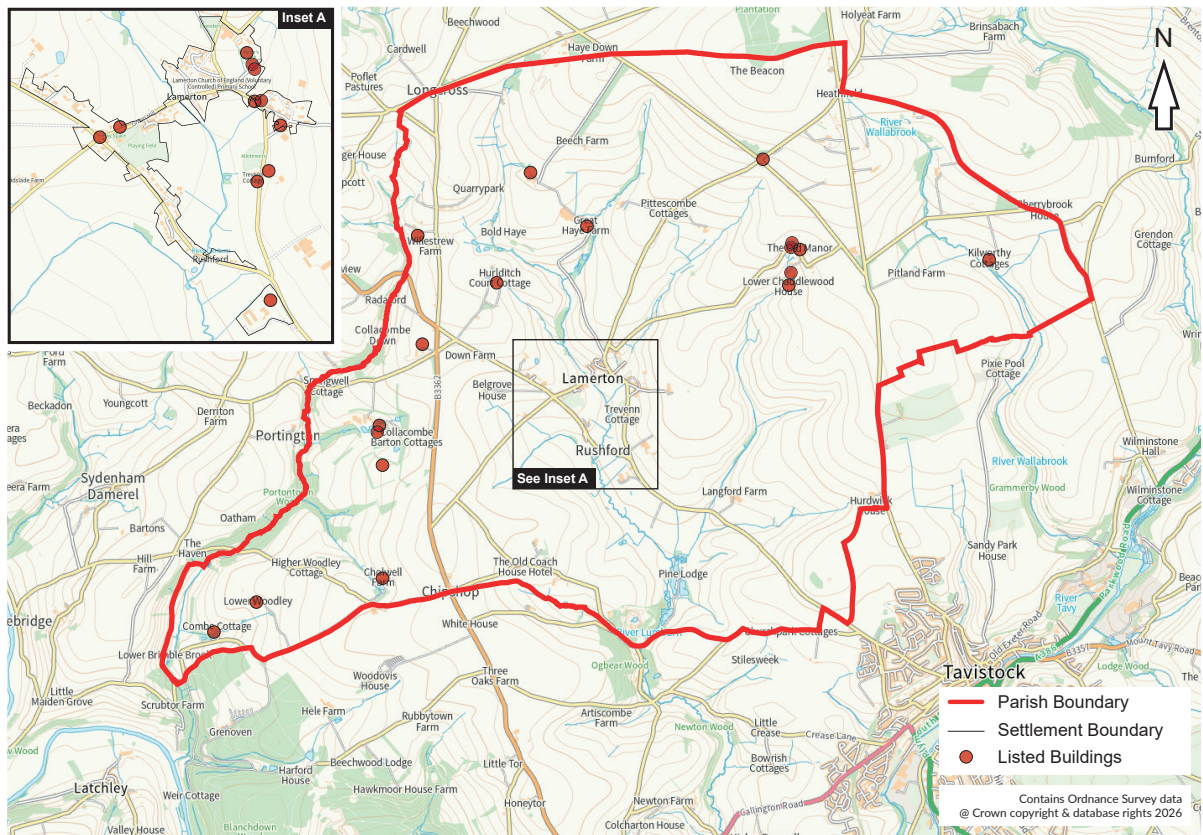
II Milestone at SX 435 757 (/101105777-milestone-at-sx-435-757-lamerton)

Chipshop, West Devon, PL19

II Milestone at SX 473 774 (/101326228-milestone-at-sx-473-774-lamerton)

West Devon, PL19 [Heathfield]

Location of listed properties in the Parish of Lamerton



List of non-designated assets suggested by local residents:

- Area of Hilltown
- Area of Mulleywell
- Cottages at Rushford (photo)
- Row of Duke of Bedford cottages Ottery (photo)
- Old Post Office (photo)
- Blacksmiths Arms (photo)
- The Parish Boundary Stones
- The School
- Belgrove House
- Court Barton
- Clapper bridge over River Lumburn
- Hurdwick Farm
- Ottery House - Ottery
- Collacombe Down Cottages
- Cattle rubbing stone in Bulls Field (photo)



Rushford Cottages



Duke of Bedford Cottages, Ottery



Old Post Office



Blacksmiths Arms



Cattle rubbing stone Bull field



School