

APPENDIX XIV - NP EVIDENCE BASE VISUAL IMPACT

The importance of the landscape

WDBC's 2011 Strategic Plan acknowledges the importance of the beautiful landscape of West Devon which makes parishes such as Lamerton a tourist destination and places that people aspire to live and retire to.

The main employment activity in the parish is agriculture and related activities. Some tourism, spread across the parish with bed and breakfast and self-catering accommodation, is closely connected with the beautiful rural landscape, its proximity to Dartmoor and to historic towns like Tavistock.

Key to maintaining these sources of revenue is to conserve what people come here to enjoy - the landscape and unspoiled open countryside. Conserving means not only maintaining the habitats and field systems that make up the landscape but ensuring that development does not intrude or blight that landscape. Well designed housing, at an appropriate scale and sensitive to its environment can ensure that both the landscape and the built environment can co-exist more beneficially.

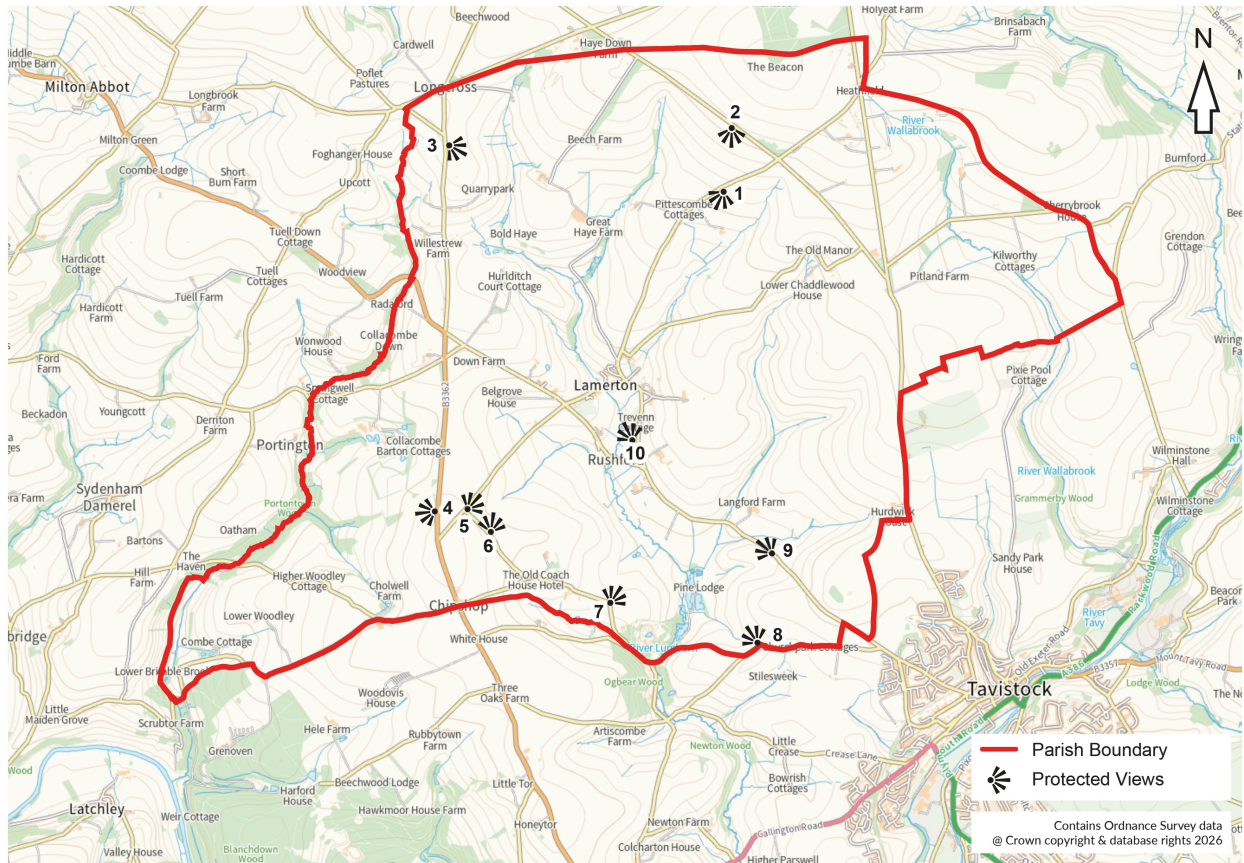
Most parishioners accept that some development is essential to ensure a sustainable future but are adamant that it should not impact negatively on the scenic quality of the area. Stunning views of Lamerton and majestic landscapes and features such as Kit Hill near Callington in the west and the moors of west Dartmoor in the East can be glimpsed from many locations in the parish.

Preserving the vistas

Within this context, the NP has drawn up a Visual Impact Map, which shows some of the most prominent views. (Map below)

Not every viewpoint can be listed here but the photographs and locations are illustrative of the long distance views that characterise the area and are so valued by residents and visitors.

Views to be protected



Visual impact map



View 1



View 2



View 3



View 4



View 5



View 6



View 7



View 8



View 9



View 10